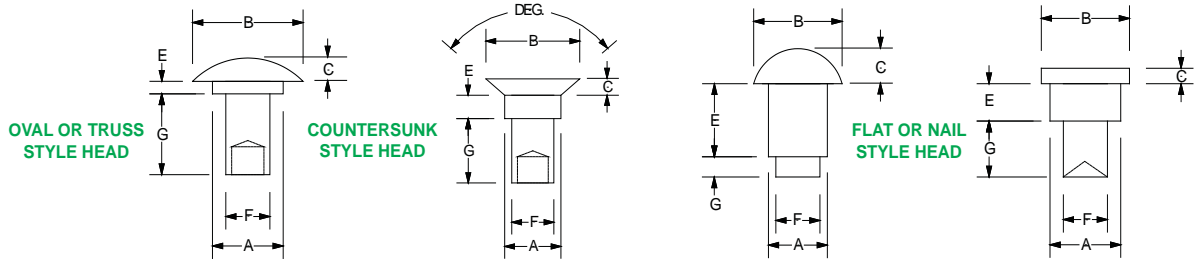




SHOULDER RIVETS



SHOULDER
 TENON



PART NUMBER	HEAD STYLE	SHOULDER DIA. "A"	SHOULDER LENGTH "E"	TENON DIA. "F"	TENON LENGTH "G"	HEAD DIA. "B"	HEAD HEIGHT "C"	RIVET TYPE	MATERIAL	FINISH
6-0306-0302	OVAL	.110	.187	.095	.060	.185	.035	SOLID	STEEL	BRASS
6-0402-0303	OVAL	.118	.056	.090	.085	.221	.035	SEMI-TUBULAR	STEEL	NICKEL
6-0402-0303.1	OVAL	.120	.085	.087	.104	.220	.034	SEMI-TUBULAR	ALUMINUM	PLAIN
6-0402-0303.2	OVAL	.120	.056	.090	.085	.220	.034	SEMI-TUBULAR	302 STAINLESS	PASSIVATED
6-0402-0304	OVAL	.135	.071	.091	.110	.310	.034	SEMI-TUBULAR	STEEL	NICKLE
6-0402-0304.1	TRUSS	.135	.071	.091	.110	.310	.034	SEMI-TUBULAR	STEEL	ZINC
6-0402-0405	OVAL	.135	.070	.118	.194	.250	.034	SEMI-TUBULAR	300 STAINLESS	PLAIN
6-0403-0404	FLAT	.121	.080	.112	.110	.250	.040	SEMI-TUBULAR	302 STAINLESS	PASSIVATED
6-0403-0405	TRUSS	.142	.085	.122	.148	.250	.062	SEMI-TUBULAR	300 STAINLESS	PASSIVATED
6-0403-0406	OVAL	.140	.085	.122	.178	.250	.062	SEMI-TUBULAR	300 STAINLESS	PASSIVATED
6-0404-0304	100° CTSK	.140	.115	.110	.115	.215	.054	SEMI-TUBULAR	STEEL	ZINC
6-0404-0306	OVAL	.120	.135	.095	.200	.230	.034	SEMI-TUBULAR	STEEL	PLAIN
6-0404-0403	FLAT	.141	.130	.125	.090	.210	.035	SEMI-TUBULAR	304 STAINLESS	PASSIVATED
6-0405-0303	OVAL	.120	.253	.091	.099	.218	.030	SEMI-TUBULAR	STEEL	PLAIN
6-0405-0407	FLAT	.130	.155	.120	.209	.240	.155	SEMI-TUBULAR	430 STAINLESS	PLAIN
6-0406-0302	OVAL	.112	.187	.095	.060	.285	.034	SOLID	STEEL	PLAIN
6-0408-0304	FLAT	.125	.247	.090	.135	.250	.035	SEMI-TUBULAR	STEEL	ZINC
6-0417-0303	OVAL	.120	.525	.085	.100	.205	.042	SEMI-TUBULAR	STEEL	NICKEL
6-0501-0403.5	120° CTSK	.140	.040	.121	.110	.240	.035	SEMI-TUBULAR	STEEL	ZINC
6-0502-0406	OVAL	.156	.068	.123	.186	.260	.046	SOLID	5052ALUMINUM	PLAIN
6-0503-0303	FLAT	.160	.093	.093	.094	.250	.093	SEMI-TUBULAR	STEEL	PLAIN
6-0503-0403	OVAL	.156	.140	.128	.090	.218	.057	SOLID	430 STAINLESS	PLAIN
6-0503-0403.1	OVAL	.168	.060	.120	.085	.312	.062	SEMI-TUBULAR	STEEL	ZINC
6-0504-0404	OVAL	.165	.124	.125	.136	.250	.031	SEMI-TUBULAR	305 STAINLESS	PLAIN
6-0505-0309	OVAL	.150	.150	.095	.295	.220	.030	SEMI-TUBULAR	STEEL	ZINC
6-0508-0304	TRUSS	.150	.250	.080	.110	.370	.065	SOLID	BRASS	PLAIN
6-0514-0303	OVAL	.155	.437	.090	.100	.285	.087	SOLID	ALUMINUM	PLAIN
6-0602-0402	OVAL	.175	.050	.120	.084	.280	.035	SEMI-TUBULAR	STEEL	ZINC
6-0602-0403.2	FLAT	.178	.043	.120	.090	.280	.025	SEMI-TUBULAR	STEEL	ZINC
6-0602-0403.3	UNIVERSAL	.182	.050	.120	.082	.248	.080	SOLID	STEEL	BLACK
6-0602-0502	FLAT	.198	.067	.151	.075	.312	.030	SEMI-TUBULAR	STEEL	ZINC
6-0602-0502.1	FLAT	.198	.065	.151	.076	.312	.030	SOLID	STEEL	ZINC
6-0602-0503	TRUSS	.198	.063	.150	.100	.312	.060	SEMI-TUBULAR	430 STAINLESS	PLAIN
6-0602-0504.1	OVAL	.198	.056	.151	.120	.312	.062	SEMI-TUBULAR	STEEL	ZINC

The Shoulder Rivets on this page are sizes we typically have in stock. We are constantly adding new sizes and can supply Shoulder Rivets made to your specifications.

**HANSON RIVET®**

& SUPPLY CO.
 13241 Weidner Street
 Pacoima, CA 91331

Please visit our
 website for additional sizes

Phone: 818-485-0500

FAX: 818-485-0540

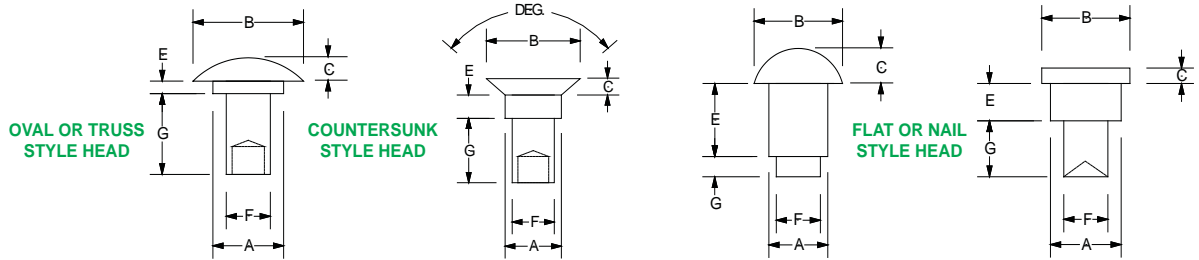
Outside CA: 1-800-RRRIVET

www.hansonrivet.com

SHOULDER RIVETS



SHOULDER
 TENON



PART NUMBER	HEAD STYLE	SHOULDER DIA. "A"	SHOULDER LENGTH "E"	TENON DIA. "F"	TENON LENGTH "G"	HEAD DIA. "B"	HEAD HEIGHT "C"	RIVET TYPE	MATERIAL	FINISH
6-0602-0504.2	OVAL	.198	.060	.151	.119	.312	.062	SEMI-TUBULAR	STEEL	ZINC
6-0602-0504.4	OVAL	.198	.063	.151	.168	.312	.062	SEMI-TUBULAR	STEEL	ZINC
6-0602-0505	OVAL	.185	.066	.144	.163	.309	.065	SEMI-TUBULAR	ALUMINUM	PLAIN
6-0602-0507	100° CTSK	.180	.125	.143	.202	.274	.075	SEMI-TUBULAR	ALUMINUM	PLAIN
6-0602-0510	100° CTSK	.172	.125	.143	.332	.280	.060	SEMI-TUBULAR	ALUMINUM	PLAIN
6-0603-0405	FLAT	.186	.090	.123	.160	.385	.050	SOLID	STEEL	ZINC
6-0603-0407	FLAT	.192	.090	.123	.218	.375	.032	SOLID	STEEL	PLAIN
6-0603-0504.1	TRUSS	.198	.109	.151	.135	.312	.062	SEMI-TUBULAR	STEEL	ZINC
6-0603-0505.1	TRUSS	.185	.075	.145	.156	.375	.062	SEMI-TUBULAR	STEEL	ZINC
6-0603-0508	OVAL	.187	.093	.153	.250	.312	.062	SEMI-TUBULAR	5052 ALUMINUM	BLACK
6-0604-0404.1	OVAL	.185	.135	.120	.120	.310	.087	SOLID	1100F ALUMINUM	PLAIN
6-0604-0404.2	OVAL	.170	.125	.120	.120	.312	.046	SEMI-TUBULAR	STEEL	ZINC
6-0604-0404H.1	120° CTSK	.180	.125	.124	.142	.500	.125	SOLID	430 STAINLESS	PASSIVATED
6-0604-0405	FLAT	.180	.125	.124	.142	.300	.080	SOLID	430 STAINLESS	PASSIVATED
6-0604-0506	100° CTSK	.174	.113	.143	.187	.282	.072	SEMI-TUBULAR	ALUMINUM	PLAIN
6-0605-0514	150° CTSK	.175	.150	.140	.250	.315	.032	SEMI-TUBULAR	ALUMINUM	PLAIN
6-0608-0504	FLAT	.185	.250	.156	.125	.250	.030	SEMI-TUBULAR	STEEL	ZINC
6-0691-0404	OVAL	.185	2.850	.145	.150	.310	.060	SEMI-TUBULAR	STEEL	PLAIN
6-0702-0608	FLAT	.213	.075	.180	.250	.283	.063	SOLID	STEEL	PLAIN
6-0702-0611	100°CTSK	.214	.047	.184	.333	.334	.060	SEMI-TUBULAR	STEEL	PLAIN
6-0703-0605	FLAT	.227	.080	.187	.158	.375	.046	SOLID	STEEL	PLAIN
6-0703-0605.1	FLAT	.227	.080	.187	.158	.375	.046	SOLID	STEEL	ZINC
6-0802-0404	FLAT	.220	.067	.138	.140	.380	.060	SEMI-TUBULAR	STEEL	ZINC
6-0802-0604	FLAT	.240	.075	.180	.135	.400	.040	SEMI-TUBULAR	STEEL	ZINC
6-0802-0608	OVAL	.240	.070	.185	.245	.343	.046	SEMI-TUBULAR	5056 ALUMINUM	SATIN ETCH
6-0803-0502.5	FLAT	.245	.082	.152	.078	.402	.040	SOLID	STEEL	ZINC
6-0803-0502.5A	FLAT	.246	.082	.155	.078	.402	.042	SOLID	STEEL	ZINC
6-0803-0503-A	FLAT	.236	.106	.154	.106	.394	.039	SOLID	STEEL	ZINC
6-0803-0503-X	FLAT	.236	.106	.154	.133	.394	.039	SOLID	STEEL	ZINC
6-0803-0504	FLAT	.271	.078	.154	.125	.375	.060	SOLID	STEEL	ZINC
6-0803-0506	FLAT	.242	.106	.154	.175	.394	.039	SOLID	STEEL	ZINC
6-0803-0604	FLAT	.249	.094	.187	.132	.376	.060	SOLID	STEEL	ZINC
6-0803-0604.5	FLAT	.249	.105	.185	.140	.413	.063	SOLID	STEEL	ZINC
6-0803-0604.6	FLAT	.249	.105	.185	.140	.413	.063	SEMI-TUBULAR	STEEL	ZINC
6-0803-0605.1	FLAT	.248	.102	.186	.140	.381	.062	SOLID	STEEL	ZINC
6-0803-0606	FLAT	.250	.080	.182	.196	.375	.095	SEMI-TUBULAR	430 STAINLESS	PLAIN
6-0803-0607	FLAT	.250	.080	.188	.219	.400	.060	SEMI-TUBULAR	ALUMINUM	ZINC

The Shoulder Rivets on this page are sizes we typically have in stock. We are constantly adding new sizes and can supply Shoulder Rivets made to your specifications.



HANSON RIVET[®]
 & SUPPLY CO.
 13241 Weidner Street
 Pacoima, CA 91331

Please visit our website for additional sizes

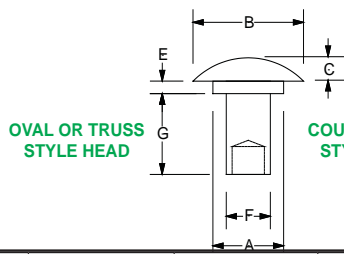
Phone: 818-485-0500
 FAX: 818-485-0540
 Outside CA: 1-800-RRRIVET
www.hansonrivet.com



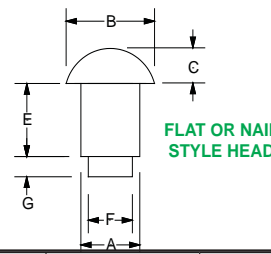
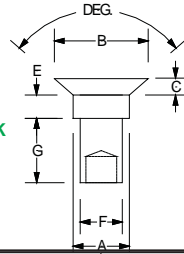
SHOULDER RIVETS



SHOULDER
 TENON



COUNTERSUNK STYLE HEAD



PART NUMBER	HEAD STYLE	SHOULDER DIA. "A"	SHOULDER LENGTH "E"	TENON DIA. "F"	TENON LENGTH "G"	HEAD DIA. "B"	HEAD HEIGHT "C"	RIVET TYPE	MATERIAL	FINISH
6-0804-0604	FLAT	.250	.110	.185	.125	.375	.035	SEMI-TUBULAR	STEEL	ZINC
6-0804-0606	FLAT	.234	.130	.185	.187	.439	.062	SEMI-TUBULAR	300 STAINLESS	PLAIN
6-0804-0607	FLAT	.237	.120	.185	.200	.437	.060	SEMI-TUBULAR	ALUMINUM	PLAIN
6-0804-0608	FLAT	.237	.138	.185	.200	.376	.090	SEMI-TUBULAR	STEEL	PLAIN
6-0805-0603	FLAT	.245	.149	.181	.093	.375	.027	SEMI-TUBULAR	STEEL	ZINC
6-0805-0603.1	FLAT	.245	.149	.182	.093	.372	.032	SOLID	STEEL	ZINC
6-0805-0604	FLAT	.249	.150	.185	.138	.373	.050	SEMI-TUBULAR	STEEL	ZINC
6-0805-0605	FLAT	.248	.158	.185	.158	.400	.100	SEMI-TUBULAR	430 STAINLESS	PASSIVATED
6-0805-0605.1	FLAT	.250	.150	.188	.152	.300	.035	SEMI-TUBULAR	ALUMINUM	PLAIN
6-0805-0605.2	FLAT	.243	.147	.180	.160	.375	.027	SEMI-TUBULAR	STEEL	ZINC
6-0806-0605	FLAT	.246	.177	.185	.145	.400	.035	SEMI-TUBULAR	STEEL	BLACK ZINC
6-0806-0605.1	FLAT	.246	.177	.185	.133	.400	.035	SEMI-TUBULAR	STEEL	BLACK ZINC
6-0806-0629.5	FLAT	.245	.179	.184	.933	.375	.042	SEMI-TUBULAR	STEEL	ZINC
6-0806-0633	FLAT	.245	.179	.184	1.036	.373	.042	SEMI-TUBULAR	STEEL	ZINC
6-0808-0508	FLAT	6.1mm	5.75mm	4.0mm	6.4mm	9.0mm	1.00mm	SEMI-TUBULAR	300 STAINLESS	PASSIVATED
6-0808-0604	FLAT	.249	.230	.185	.138	.373	.050	SEMI-TUBULAR	STEEL	ZINC
6-0808-0607	FLAT	.242	.272	.182	.198	.345	.035	SEMI-TUBULAR	ALUMINUM	ZINC
6-0810-0605	FLAT	.250	.305	.188	.152	.300	.035	SEMI-TUBULAR	ALUMINUM	PLAIN
6-0812-0606	FLAT	.250	.375	.187	.187	.375	.065	SOLID	STEEL	ZINC
6-0814-0506	FLAT	.248	.433	.169	.188	.437	.215	SEMI-TUBULAR	STEEL	PLAIN
6-0816-0606	FLAT	.250	.500	.185	.202	.312	.125	SEMI-TUBULAR	STEEL	ZINC
6-0925-0607	FLAT	.275	.795	.187	.212	.400	.046	SEMI-TUBULAR	STEEL	ZINC
6-1003-0807	FLAT	.247	.215	.314	.102	.495	.123	SOLID	STEEL	ZINC
6-1003-0808	FLAT	.304	.100	.243	.218	.440	.078	SEMI-TUBULAR	STEEL	ZINC
6-1003-0808.1	FLAT	.290	.076	.250	.268	.437	.087	SEMI-TUBULAR	STEEL	PLAIN
6-1003-0808.2	FLAT	.290	.100	.250	.268	.437	.087	SEMI-TUBULAR	STEEL	PLAIN
6-1004-0807	FLAT	.310	.117	.244	.214	.497	.125	SOLID	STEEL	ZINC
6-1005-0807	FLAT	.314	.145	.247	.215	.495	.125	SOLID	STEEL	ZINC
6-1005-0809	FLAT	.312	.159	.248	.281	.500	.062	SEMI-TUBULAR	430 STAINLESS	PLAIN
6-1006-0606	TRUSS	.312	.188	.188	.188	.612	.093	SEMI-TUBULAR	5056 ALUMINUM	PLAIN
6-1006-0609	OVAL	.313	.188	.188	.290	.612	.093	SEMI-TUBULAR	5056 ALUMINUM	PLAIN
6-1006-0713	165° CTSK	.309	.195	.213	.400	.495	.065	SEMI-TUBULAR	STEEL	ZINC
6-1008-0821	165° CTSK	.309	.235	.248	.656	.495	.075	SEMI-TUBULAR	STEEL	ZINC
6-1009-0810	PAN	.312	.270	.248	.312	.495	.150	SEMI-TUBULAR	STEEL	PLAIN
6-1010-0808.1	FLAT	.310	.310	.247	.260	.500	.070	SEMI-TUBULAR	STEEL	BLACK ZINC
6-1012-0811	FLAT	.303	.390	.245	.340	.562	.094	SEMI-TUBULAR	STEEL	PLAIN
6-1020-0618	FLAT	.312	.630	.192	.562	.500	.100	SOLID	STEEL	PLAIN
6-1203-0804	FLAT	.375	.072	.250	.110	.625	.125	SEMI-TUBULAR	304 STAINLESS	PLAIN

The Shoulder Rivets on this page are sizes we typically have in stock. We are constantly adding new sizes and can supply Shoulder Rivets made to your specifications.



Please visit our website for additional sizes

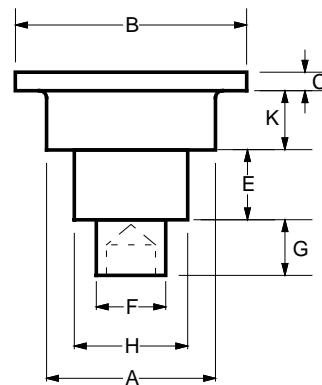


SHOULDER RIVETS



PART NUMBER	HEAD STYLE	SHOULDER DIA. "A"	SHOULDER LENGTH "E"	TENON DIA. "F"	TENON LENGTH "G"	HEAD DIA. "B"	HEAD HEIGHT "C"	RIVET TYPE	MATERIAL	FINISH
6-1203-0805	FLAT	.375	.085	.250	.167	.625	.060	SEMI-TUBULAR	STEEL	ZINC
6-1205-0807	OVAL	.375	.150	.250	.210	.500	.055	SOLID	STEEL	PLAIN
6-1205-0811	FLAT	.370	.165	.250	.335	.750	.112	SOLID	1006 STEEL	ZINC
6-1205-0811.1	FLAT	.370	.165	.250	.335	.750	.085	SOLID	1006 STEEL	ZINC
6-1209-1012	FLAT	.369	.289	.306	.392	.750	.098	SEMI-TUBULAR	STEEL	PLAIN
6-1225-1011	FLAT	.375	.780	.312	.338	.750	.100	SEMI-TUBULAR	STEEL	BLACK ZINC
6-2007-1420.K	FLAT	.600	.100	.415	.650	.925	.125	SEMI-TUBULAR	STEEL	ZINC

DOUBLE SHOULDER RIVETS



PART NUMBER	HEAD STYLE	SHOULDER (1) DIA. "A"	SHOULDER (1) LENGTH "K"	SHOULDER (2) DIA. "H"	SHOULDER (2) LENGTH "E"	TENON DIA. "F"	TENON LENGTH "G"	HEAD DIA. "B"	HEAD HEIGHT "C"	RIVET TYPE	MATERIAL	FINISH
6-1202-0902-0702	FLAT	.370	.041	.278	.064	.216	.081	.500	.026	SEMI-TUBULAR	STEEL	ZINC
6-1204-0805-0505	FLAT	.365	.128	.245	.151	.150	.122	.500	.040	SEMI-TUBULAR	STEEL	ZINC
6-1204-0805-0505.1	FLAT	.384	.132	.245	.151	.150	.126	.500	.048	SEMI-TUBULAR	STEEL	ZINC
6-1204-0805-0505.2	FLAT	.365	.128	.245	.163	.150	.160	.500	.040	SEMI-TUBULAR	STEEL	ZINC
6-1204-0805-0505.3	FLAT	.365	.128	.245	.148	.150	.160	.500	.040	SEMI-TUBULAR	STEEL	ZINC
6-1204-0805-0506	FLAT	.365	.128	.245	.151	.150	.175	.500	.030	SOLID	STEEL	ZINC

The Shoulder Rivets on this page are sizes we typically have in stock. We are constantly adding new sizes and can supply Shoulder Rivets made to your specifications.