



HANSON RIVET

& SUPPLY CO.
13241 Weidner Street
Pacoima, CA 91331

See pages D74-D88 for
installation tools and
machines

Phone: 818-485-0500

FAX: 818-485-0540

Outside CA: 1-800-RRRIVET

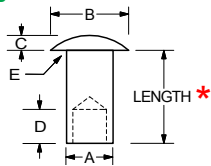
www.hansonrivet.com



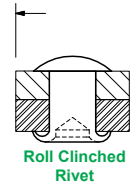
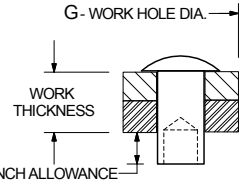
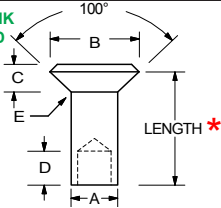
MIL-SPEC TUBULAR RIVETS



OVAL
HEAD



COUNTERSUNK
SHEAR HEAD



* LENGTH (in 32nds) = WORK THICKNESS + CLINCH ALLOWANCE "F" (Example Part #: MS20450-C8-9 for 1/8 x 9/32 specify material and finish)

BASIC MIL-SPEC PART NUMBER	HEAD STYLE	BODY DIAMETER "A" MIN / MAX	HEAD DIAMETER "B" MIN / MAX	HEAD HEIGHT "C" MIN / MAX	HOLE DEPTH "D"	FILLET RADIUS "E"	CLINCH ALLOWANCE "F"	WORK HOLE "G"
MS20450-C4-*	OVAL	.058/.061	.104/.114	.015/.019	.044	.005	.037	.064
MS20450-C6-*	OVAL	.085/.089	.142/.152	.020/.026	.064	.010	.054	.096
MS20450-D6-*	100° SHEAR	.085/.089	.164/.172	.065 REF.	.062	.010	.054	.096
MS20450-C8-*	OVAL	.118/.123	.213/.223	.030/.038	.089	.016	.074	.129
MS20450-D8-*	100° SHEAR	.118/.123	.245/.255	.075/.085	.062	.010	.074	.129
MS20450-C9-*	OVAL	.141/.146	.229/.239	.035/.045	.106	.020	.088	.156
MS20450-D9-*	100° SHEAR	.141/.146	.307/.317	.086/.096	.125	.010	.088	.156
MS20450-C12-*	OVAL	.182/.188	.306/.318	.055/.065	.137	.020	.122	.201
MS20450-D12-*	100° SHEAR	.182/.188	.354/.364	.099/.109	.125	.010	.122	.201

Standard materials: **STEEL • ALUMINUM • BRASS • COPPER • STAINLESS STEEL • MONEL**

Many finishes and colors available. We also stock many non-standard sizes.

NOTE: Countersunk head dimensions may be theoretical to sharp edge of head. For other Head Styles please call our sales department.

BINDER RIVETS

PART NUMBER	LENGTH	CARTON QUANTITY	CARTON WEIGHT	DESCRIPTION
D3-6-DT	3/16	30,000	33 Lbs.	BINDER RIVET STEEL, DEEP TUBULAR COLORS AVAILABLE: BLACK, NICKEL, BRASS, WHITE, & CUSTOM COLORS
D3-8-DT	4/16	27,000	37 Lbs.	
D3-10-DT	5/16	22,000	37 Lbs.	
D3-12-DT	6/16	19,000	36 Lbs.	
D3-14-DT	7/16	17,000	38 Lbs.	
D3-16-DT	8/16	16,000	40 Lbs.	
D3-18-DT	9/16	14,000	39 Lbs.	FLAT / 150° COUNTERSUNK BINDER RIVET STEEL, DEEP TUBULAR COLORS AVAILABLE: BLACK, NICKEL, BRASS, WHITE, & CUSTOM COLORS
D3-20-DT	10/16	13,000	40 Lbs.	
D3-24-DT	12/16	12,000	40 Lbs.	
4-3S	3/16	30,000	33 Lbs.	
4-4S	4/16	27,000	37 Lbs.	
4-5S	5/16	22,000	37 Lbs.	
4-6S	6/16	19,000	36 Lbs.	"CONCEALED" BINDER RIVET FLAT / 150° COUNTERSUNK ALUMINUM SEMI-TUBULAR STANDARD FINISH: PLAIN
4-7S	7/16	17,000	38 Lbs.	
4-8S	8/16	16,000	40 Lbs.	
4-9S	9/16	14,000	39 Lbs.	
4-10S	10/16	12,000	38 Lbs.	
4-12S	12/16	10,000	35 Lbs.	
4-3A	3/16	30,000	14 Lbs.	"CONCEALED" BINDER RIVET FLAT NAIL HEAD ALUMINUM SEMI-TUBULAR STANDARD FINISH: PLAIN
4-4A	4/16	27,000	14 Lbs.	
4-5A	5/16	22,000	13 Lbs.	
4-6A	6/16	19,000	14 Lbs.	
4-7A	7/16	17,000	14 Lbs.	
4-8A	8/16	16,000	15 Lbs.	
4-9A	9/16	14,000	15 Lbs.	"STAKING" BINDER RIVET ALUMINUM SEMI-TUBULAR STANDARD FINISH: PLAIN
4-10A	10/16	13,000	15 Lbs.	
BAF-4	4/16	26,000	13 Lbs.	
BAF-5	5/16	24,000	13 Lbs.	
BAF-6	6/16	20,000	13 Lbs.	
BAF-7	7/16	18,000	13 Lbs.	
BAF-8	8/16	16,000	13 Lbs.	
BAF-9	9/16	14,000	13 Lbs.	
BAF-10	10/16	13,000	13 Lbs.	
RA-40721	5/16	QUANTITY PRICE BREAKS (BULK PACKAGED) 5,000 • 10,000 • 25,000 • 50,000 100,000 • 250,000 • 500,000	13 Lbs.	 STANDARD FINISH: PLAIN
RA-41474	6/16		13 Lbs.	
RA-40723	7/16		13 Lbs.	
RA-40720	8/16		13 Lbs.	
RA-40722	9/16		13 Lbs.	

LOOSE LEAF BINDER ASSEMBLY MACHINE
 The machine pictured below combines the rugged dependability of two automatic feed National Model 500B Riveters with a fully adjustable base to provide the most efficient way to rivet loose leaf binders. A hand crank allows the two riveting heads to be quickly and easily moved to any center distance between 2-1/2" and 18". The locating fixture is designed to optimize both the production rate and accuracy of part location, and is easily adjustable for various binder sizes.

